

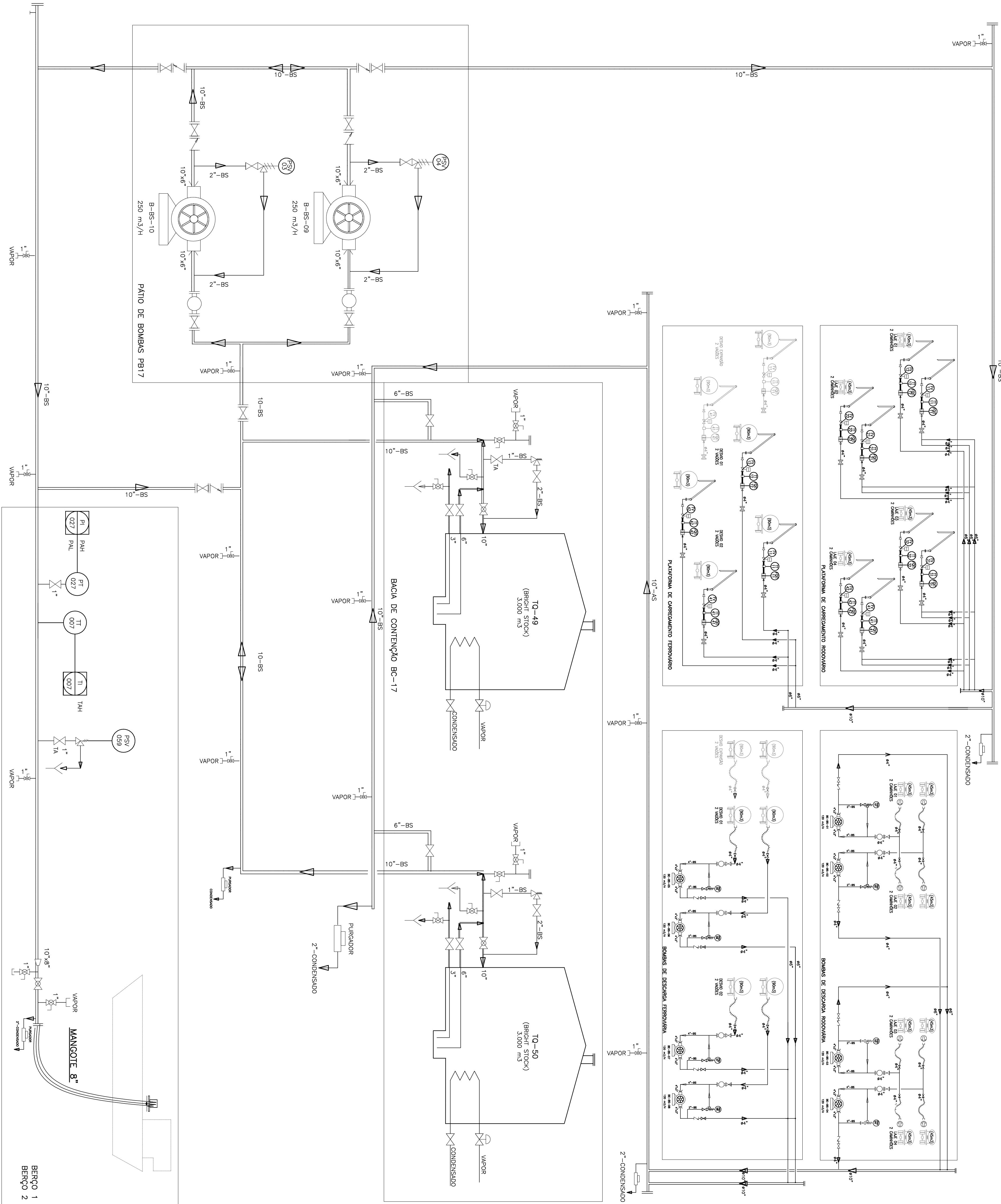
[illegible]

1 - FONTE DESENHO N°: AÇU-1.FLE-2.3000-03-TCN-003 REV. B

LEGENDA

TABELA GERAL DE PREÇOS DE REFERÊNCIA DE 2010

TABELA	CÓDIGO	UNIDADES		CÓDIGO	UNIDADES	CÓDIGO		UNIDADES	CÓDIGO	UNIDADES	CÓDIGO	UNIDADES			
		ABRIL/2010	MAIO/2010			ABRIL/2010	MAIO/2010								
72-01	BRNTO 12/12	3,000	27,700	14-08	CHOCOLATE	400	300	72-02	BRNTO 12/12	3,000	27,700	14-09	CHOCOLATE	400	300
72-02	BRNTO 12/12	3,000	27,700	14-09	CHOCOLATE	400	300	72-03	BRNTO 12/12	3,000	27,700	14-10	CHOCOLATE	400	300
72-03	BRNTO 12/12	3,000	27,700	14-10	CHOCOLATE	400	300	72-04	BRNTO 12/12	3,000	27,700	14-11	CHOCOLATE	400	300
72-04	BRNTO 12/12	3,000	27,700	14-11	CHOCOLATE	400	300	72-05	BRNTO 12/12	3,000	27,700	14-12	CHOCOLATE	400	300
72-05	BRNTO 12/12	3,000	27,700	14-12	CHOCOLATE	400	300	72-06	BRNTO 12/12	3,000	27,700	15-01	CHOCOLATE	400	300
72-06	BRNTO 12/12	3,000	27,700	15-01	CHOCOLATE	400	300	72-07	BRNTO 12/12	3,000	27,700	15-02	CHOCOLATE	400	300
72-07	BRNTO 12/12	3,000	27,700	15-02	CHOCOLATE	400	300	72-08	BRNTO 12/12	3,000	27,700	15-03	CHOCOLATE	400	300
72-08	BRNTO 12/12	3,000	27,700	15-03	CHOCOLATE	400	300	72-09	BRNTO 12/12	3,000	27,700	15-04	CHOCOLATE	400	300
72-09	BRNTO 12/12	3,000	27,700	15-04	CHOCOLATE	400	300	72-10	BRNTO 12/12	3,000	27,700	15-05	CHOCOLATE	400	300
72-10	BRNTO 12/12	3,000	27,700	15-05	CHOCOLATE	400	300	72-11	BRNTO 12/12	3,000	27,700	15-06	CHOCOLATE	400	300
72-11	BRNTO 12/12	3,000	27,700	15-06	CHOCOLATE	400	300	72-12	BRNTO 12/12	3,000	27,700	15-07	CHOCOLATE	400	300
72-12	BRNTO 12/12	3,000	27,700	15-07	CHOCOLATE	400	300	72-13	BRNTO 12/12	3,000	27,700	15-08	CHOCOLATE	400	300
72-13	BRNTO 12/12	3,000	27,700	15-08	CHOCOLATE	400	300	72-14	BRNTO 12/12	3,000	27,700	15-09	CHOCOLATE	400	300
72-14	BRNTO 12/12	3,000	27,700	15-09	CHOCOLATE	400	300	72-15	BRNTO 12/12	3,000	27,700	15-10	CHOCOLATE	400	300
72-15	BRNTO 12/12	3,000	27,700	15-10	CHOCOLATE	400	300	72-16	BRNTO 12/12	3,000	27,700	15-11	CHOCOLATE	400	300
72-16	BRNTO 12/12	3,000	27,700	15-11	CHOCOLATE	400	300	72-17	BRNTO 12/12	3,000	27,700	15-12	CHOCOLATE	400	300
72-17	BRNTO 12/12	3,000	27,700	15-12	CHOCOLATE	400	300	72-18	BRNTO 12/12	3,000	27,700	16-01	CHOCOLATE	400	300
72-18	BRNTO 12/12	3,000	27,700	16-01	CHOCOLATE	400	300	72-19	BRNTO 12/12	3,000	27,700	16-02	CHOCOLATE	400	300
72-19	BRNTO 12/12	3,000	27,700	16-02	CHOCOLATE	400	300	72-20	BRNTO 12/12	3,000	27,700	16-03	CHOCOLATE	400	300
72-20	BRNTO 12/12	3,000	27,700	16-03	CHOCOLATE	400	300	72-21	BRNTO 12/12	3,000	27,700	16-04	CHOCOLATE	400	300
72-21	BRNTO 12/12	3,000	27,700	16-04	CHOCOLATE	400	300	72-22	BRNTO 12/12	3,000	27,700	16-05	CHOCOLATE	400	300
72-22	BRNTO 12/12	3,000	27,700	16-05	CHOCOLATE	400	300	72-23	BRNTO 12/12	3,000	27,700	16-06	CHOCOLATE	400	300
72-23	BRNTO 12/12	3,000	27,700	16-06	CHOCOLATE	400	300	72-24	BRNTO 12/12	3,000	27,700	16-07	CHOCOLATE	400	300
72-24	BRNTO 12/12	3,000	27,700	16-07	CHOCOLATE	400	300	72-25	BRNTO 12/12	3,000	27,700	16-08	CHOCOLATE	400	300
72-25	BRNTO 12/12	3,000	27,700	16-08	CHOCOLATE	400	300	72-26	BRNTO 12/12	3,000	27,700	16-09	CHOCOLATE	400	300
72-26	BRNTO 12/12	3,000	27,700	16-09	CHOCOLATE	400	300	72-27	BRNTO 12/12	3,000	27,700	16-10	CHOCOLATE	400	300
72-27	BRNTO 12/12	3,000	27,700	16-10	CHOCOLATE	400	300	72-28	BRNTO 12/12	3,000	27,700	16-11	CHOCOLATE	400	300
72-28	BRNTO 12/12	3,000	27,700	16-11	CHOCOLATE	400	300	72-29	BRNTO 12/12	3,000	27,700	16-12	CHOCOLATE	400	300
72-29	BRNTO 12/12	3,000	27,700	16-12	CHOCOLATE	400	300	72-30	BRNTO 12/12	3,000	27,700	17-01	CHOCOLATE	400	300
72-30	BRNTO 12/12	3,000	27,700	17-01	CHOCOLATE	400	300	72-31	BRNTO 12/12	3,000	27,700	17-02	CHOCOLATE	400	300
72-31	BRNTO 12/12	3,000	27,700	17-02	CHOCOLATE	400	300	72-32	BRNTO 12/12	3,000	27,700	17-03	CHOCOLATE	400	300
72-32	BRNTO 12/12	3,000	27,700	17-03	CHOCOLATE	400	300	72-33	BRNTO 12/12	3,000	27,700	17-04	CHOCOLATE	400	300
72-33	BRNTO 12/12	3,000	27,700	17-04	CHOCOLATE	400	300	72-34	BRNTO 12/12	3,000	27,700	17-05	CHOCOLATE	400	300
72-34	BRNTO 12/12	3,000	27,700	17-05	CHOCOLATE	400	300	72-35	BRNTO 12/12	3,000	27,700	17-06	CHOCOLATE	400	300
72-35	BRNTO 12/12	3,000	27,700	17-06	CHOCOLATE	400	300	72-36	BRNTO 12/12	3,000	27,700	17-07	CHOCOLATE	400	300
72-36	BRNTO 12/12	3,000	27,700	17-07	CHOCOLATE	400	300	72-37	BRNTO 12/12	3,000	27,700	17-08	CHOCOLATE	400	300
72-37	BRNTO 12/12	3,000	27,700	17-08	CHOCOLATE	400	300	72-38	BRNTO 12/12	3,000	27,700	17-09	CHOCOLATE	400	300
72-38	BRNTO 12/12	3,000	27,700	17-09	CHOCOLATE	400	300	72-39	BRNTO 12/12	3,000	27,700	17-10	CHOCOLATE	400	300
72-39	BRNTO 12/12	3,000	27,700	17-10	CHOCOLATE	400	300	72-40	BRNTO 12/12	3,000	27,700	17-11	CHOCOLATE	400	300
72-40	BRNTO 12/12	3,000	27,700	17-11	CHOCOLATE	400	300	72-41	BRNTO 12/12	3,000	27,700	17-12	CHOCOLATE	400	300
72-41	BRNTO 12/12	3,000	27,700	17-12	CHOCOLATE	400	300	72-42	BRNTO 12/12	3,000	27,700	18-01	CHOCOLATE	400	300
72-42	BRNTO 12/12	3,000	27,700	18-01	CHOCOLATE	400	300	72-43	BRNTO 12/12	3,000	27,700	18-02	CHOCOLATE	400	300
72-43	BRNTO 12/12	3,000	27,700	18-02	CHOCOLATE	400	300	72-44	BRNTO 12/12	3,000	27,700	18-03	CHOCOLATE	400	300
72-44	BRNTO 12/12	3,000	27,700	18-03	CHOCOLATE	400	300	72-45	BRNTO 12/12	3,000	27,700	18-04	CHOCOLATE	400	300
72-45	BRNTO 12/12	3,000	27,700	18-04	CHOCOLATE	400	300	72-46	BRNTO 12/12	3,000	27,700	18-05	CHOCOLATE	400	300
72-46	BRNTO 12/12	3,000	27,700	18-05	CHOCOLATE	400	300	72-47	BRNTO 12/12	3,000	27,700	18-06	CHOCOLATE	400	300
72-47	BRNTO 12/12	3,000	27,700	18-06	CHOCOLATE	400	300	72-48	BRNTO 12/12	3,000	27,700	18-07	CHOCOLATE	400	300
72-48	BRNTO 12/12	3,000	27,700	18-07	CHOCOLATE	400	300	72-49	BRNTO 12/12	3,000	27,700	18-08	CHOCOLATE	400	300
72-49	BRNTO 12/12	3,000	27,700	18-08	CHOCOLATE	400	300	72-50	BRNTO 12/12	3,000	27,700	18-09	CHOCOLATE	400	300
72-50	BRNTO 12/12	3,000	27,700	18-09	CHOCOLATE	400	300	72-51	BRNTO 12/12	3,000	27,700	18-10	CHOCOLATE	400	300
72-51	BRNTO 12/12	3,000	27,700	18-10	CHOCOLATE	400	300	72-52	BRNTO 12/12	3,000	27,700	18-11	CHOCOLATE	400	300
72-52	BRNTO 12/12	3,000	27,700	18-11	CHOCOLATE	400	300	72-53	BRNTO 12/12	3,000	27,700	18-12	CHOCOLATE	400	300
72-53	BRNTO 12/12	3,000	27,700	18-12	CHOCOLATE	400	300	72-54	BRNTO 12/12	3,000	27,700	19-01	CHOCOLATE	400	300
72-54	BRNTO 12/12	3,000	27,700	19-01	CHOCOLATE	400	300	72-55	BRNTO 12/12	3,000	27,700	19-02	CHOCOLATE	400	300
72-55	BRNTO 12/12	3,000	27,700	19-02	CHOCOLATE	400	300	72-56	BRNTO 12/12	3,000	27,700	19-03	CHOCOLATE	400	300
72-56	BRNTO 12/12	3,000	27,700	19-03	CHOCOLATE	400	300	72-57	BRNTO 12/12	3,000	27,700	19-04	CHOCOLATE	400	300
72-57	BRNTO 12/12	3,000	27,700	19-04	CHOCOLATE	400	300	72-58	BRNTO 12/12	3,000	27,700	19-05	CHOCOLATE	400	300
72-58	BRNTO 12/12	3,000	27,700	19-05	CHOCOLATE	400	300	72-59	BRNTO 12/12	3,000	27,700	19-06	CHOCOLATE	400	300
72-59	BRNTO 12/12	3,000	27,700	19-06	CHOCOLATE	400	300	72-60	BRNTO 12/12	3,000	27,700	19-07	CHOCOLATE	400	300
72-60	BRNTO 12/12	3,000	27,700	19-07	CHOCOLATE	400	300	72-61	BRNTO 12/12	3,000	27,700	19-08	CHOCOLATE	400	300
72-61	BRNTO 12/12	3,000	27,700	19-08	CHOCOLATE	400	300	72-62	BRNTO 12/12	3,000	27,700	19-09	CHOCOLATE	400	300
72-62	BRNTO 12/12	3,000	27,700	19-09	CHOCOLATE	400	300	72-63	BRNTO 12/12	3,000	27,700	19-10	CHOCOLATE	400	300
72-63	BRNTO 12/12	3,000	27,700	19-10	CHOCOLATE	400	300	72-64	BRNTO 12/12	3,000	27,700	19-11	CHOCOLATE	400	300
72-64	BRNTO 12/12	3,000	27,700	19-11	CHOCOLATE	400	300	72-65	BRNTO 12/12	3,000	27,700	19-12	CHOCOLATE	400	300
72-65	BRNTO 12/12	3,000	27,700	19-12	CHOCOLATE	400	300	72-66	BRNTO 12/12	3,000	27,700	20-01	CHOCOLATE	400	300
72-66	BRNTO 12/12	3,000	27,700	20-01	CHOCOLATE	400	300	72-67	BRNTO 12/12	3,000	27,700	20-02	CHOCOLATE	400	300
72-67	BRNTO 12/12	3,000	27,700	20-02	CHOCOLATE	400	300	72-68	BRNTO 12/12	3,000	27,700	20-03	CHOCOLATE	400	300
72-68	BRNTO 12/12	3,000	27,700	20-03	CHOCOLATE	400	300	72-69	BRNTO 12/12	3,000	27,700	20-04	CHOCOLATE	400	300
72-69	BRNTO 12/12	3,000	27,700	20-04	CHOCOLATE	400	300	72-70	BRNTO 12/12	3,000	27,700	20-05	CHOCOLATE	400	300
72-70	BRNTO 12/12	3,000	27,700	20-05	CHOCOLATE	400	300	72-71	BRNTO 12/12	3,000	27,700	20-06	CHOCOLATE	400	300
72-71	BRNTO 12/12	3,000	27,700	20-06	CHOCOLATE	400	300	72-72	BRNTO 12/12	3,000	27,700	20-07	CHOCOLATE	400	300
72-72	BRNTO 12/12	3,000	27,700	20-07	CHOCOLATE	400	300	72-73	BRNTO 12/12	3,000	27,700	20-08	CHOCOLATE	400	300
72-73	BRNTO 12/12	3,000	27,700	20-08	CHOCOLATE	400	300	72-74	BRNTO 12/12	3,000	27,700	20-09			



ITEMS		B-B5-01/04	B-B5-02/08	B-B5-09/10 (SEM REDUTOR)	B-B5-09/10 (COM REDUTOR)	T0-49/50
SERVO		DESCARREGAMENTO RODUVIÁRIO	DESCARREGAMENTO RODUVIÁRIO	CARREGAMENTO NAVIOS	CARREGAMENTO NAVIOS	ACABADO DE BRIGHT STOCK
CLASSE DO EQUIPAMENTO		BONDE DE ENLARGAÇÃO	BONDE DE ENLARGAÇÃO	BONDE DE ENLARGAÇÃO	BONDE DE ENLARGAÇÃO	ALVOSEFRO VERTICAL
PRODUTO		BRIGHT STOCK	BRIGHT STOCK	BRIGHT STOCK	BRIGHT STOCK	BRIGHT STOCK
CAPACIDADE		120 (m <sup>3</sup> /h)	120 (m <sup>3</sup> /h)	250 (m <sup>3</sup> /h)	90-120 (m <sup>3</sup> /h)	3.000 m <sup>3</sup>
ALTURA MÁXIMA (M H2O)		25 (mH2O)	25 (mH2O)	25 (mH2O)	25 (mH2O)	15,24 m
TEMPERATURA (°C)		59°C	59°C	59°C	59°C	59°C
VISCOSIDADE (cSt)		424 (cSt)	424 (cSt)	424 (cSt)	424 (cSt)	424 (cSt)
LOCAL DE INSTALAÇÃO		PLATAFORMA RODUVIÁRIA	PLATAFORMA RODUVIÁRIA	PLATAFORMA RODUVIÁRIA	PLATAFORMA RODUVIÁRIA	BACA SE CONTENÇÃO BC-17
OBSERVAÇÃO						SERPIENTINA INTERNA

[illegible]